

Li Uhe North Seeking Gyro



ABIM Solutions provides high quality, client-focused, drillhole surveying services to the West Australian mining industry. Applying some of the most sophisticated technology currently available worldwide, our focus is on providing timely and accurate directional survey measurements tailored to our client's needs.

Utilizing Li uhe Greatness latest generation SPT North Seeking Gyroscope and a customized logging vehicles ABIM Solutions can conduct downhole directional surveys in both underground and surface mining and exploration operations to depths of 2000m.

North Seeking Gyroscope utilizes the latest Oil and Gas industry technology to establish True North, **eliminates the requirement for sighter pegs or reference bearings**. It is the fastest, most robust North Seeking Gyroscope currently in use in the Mining industry.

The tool is ideal for directional surveying in magnetically affected ground where conventional multi-shot surveys are unreliable.

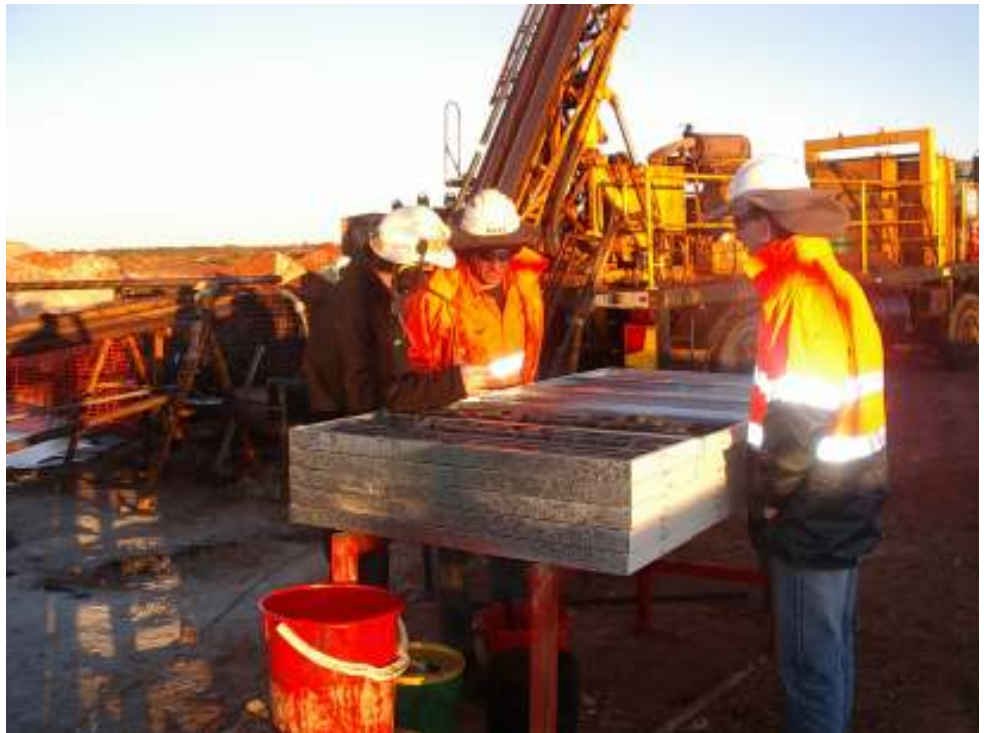
The key advantages of using the Li uhe north Seeking Gyroscope:

- **No setup delays** - the gyro initialises in less than 3 minutes
- **Azimuth accuracy $\pm 1.0^\circ$**
- **Dip accuracy $\pm 0.2^\circ$**
- **Able to used in Open holes**
- **Survey results available in realtime**

Peter Bowman
Operations Manager
ABIM Solutions
Mob: +61 4577 57194
pbowman@abims.com.au
www.abims.com.au



Li Uhe North Seeking Gyro



The Li uhe North Seeking Gyroscope uses a gyrocompass to find True North by the means of a (electrically powered) fast spinning wheel and friction forces in order to exploit the rotation of the Earth. They have two main advantages over conventional magnetic survey tools

- They find *True North*, i.e. the direction of Earth's rotational axis
- They are not affected by metals in drilling rods

For a successful North Seeking Gyroscopic survey, the following hole requirements must be met:

- Operational in Cased or Open hole
- Minimum diameter 50mm
- Maximum hole depth 2000m
- Maximum hole pressure 60MPa
- Maximum hole temperature 85°C

Li Uhe North Seeking Gyroscope Tool Specifications

- Length: 1.8m
- Diameter: 42mm
- Weight: 11kg
- Azimuth accuracy : $\pm 1.0^\circ$
- Dip accuracy : $\pm 0.2^\circ$

Peter Bowman
Operations Manager
ABIM Solutions
Mob: +61 4577 57194
pbowman@abims.com.au
www.abims.com.au

ABIM Solutions carries out strict QA/QC checks regularly on all our directional surveying instruments to ensure their precision and accuracy. Results of these checks are available to Clients upon request.